

**This document is apply for WNL-5000, WNL-6000,WNL-7000, WNC-5080 ,  
WNC-6080 , WNC-7080, WNI-6020, WN WGC-300**

**Install the USB Virtual com port driver**

**Operation guide video:**

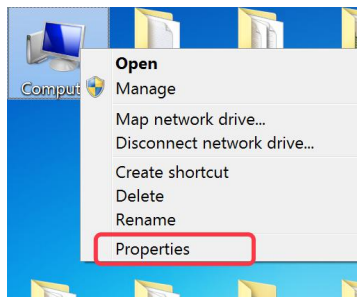
**<https://www.youtube.com/watch?v=mGX2zXH81f4>**

**A. Scan the following barcode**

	@SET	
USB virtual com port	A0002	
	@END	

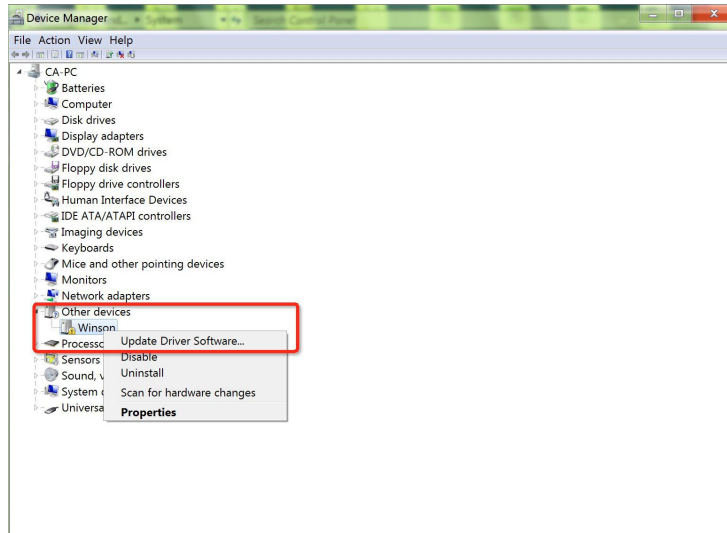
B. Please unplug and plug the scanner

c. Please find the computer Icon on PC desktop, right-click to select properties

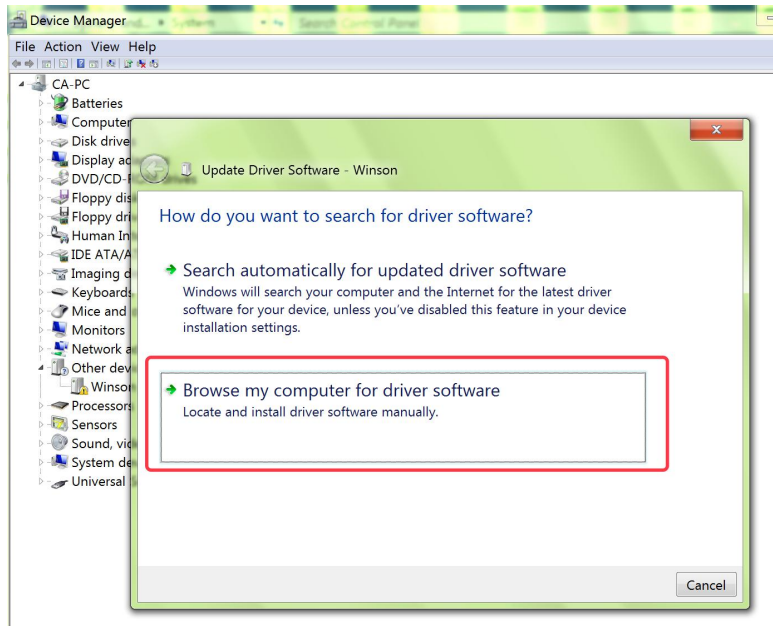


d. Click "Device Manager" then please find unknow device with Mark

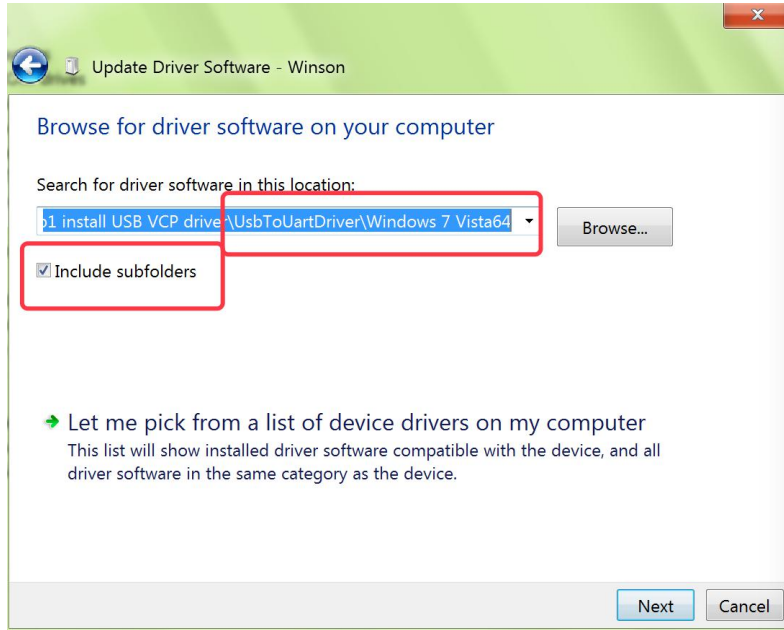




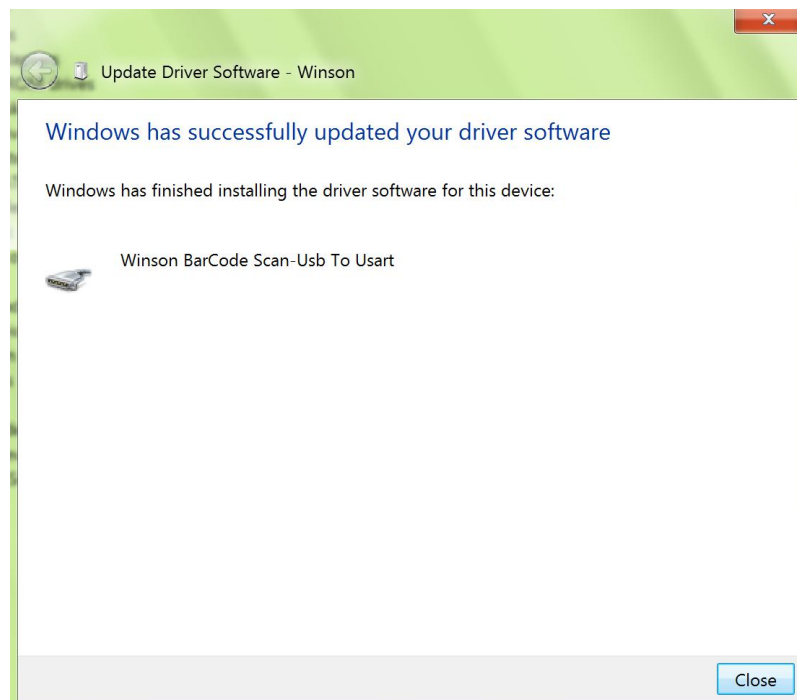
e. Right click "unknown device" usb211 to select "Update the driver software" then click the second one.



f. Please choose the location which one you store the driver file, " Winson scanner upgrade file ", select "Windows 7 Vista64 " from "UsbToUarDriver" of "Winson UsbToDriver". Then click next.



g. If install successfully, show as follows:(pls go on next)



\*PS: If install failed, it will show **Winson or Usb 211 with exclamation point**:Please change another computer, Windows XP is the best, to try again. If still failed, **Pls contact us**

